



The Most Advanced Versatile Twin Design

OmniArch is the first mid-sized bracket system that combines all the outstanding elements of the proven twin system with the most advanced bracket design available. Clinicians gain superior control, wedged torque in base, easy bonding; patients benefit from a bracket that is comfortable, aesthetically pleasing and gives outstanding results. OmniArch is available in a wide range of prescriptions and options to suit your treatment goals.

A Bracket System You Can Trust

OmniArch offers efficient and reliable treatment with no accidental debonds. A bracket system you can trust, suitable for both NHS and private patients. Using OmniArch can actually reduce your real treatment costs.

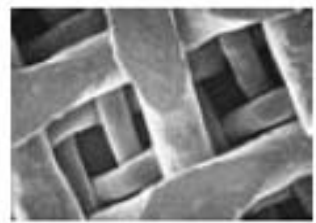
OmniArch[®]

Twin Metal Bracket System



ME® Base

GAC's SuperMesh ME base is a unique three-ply assembly that provides more consistent bonding strength with less patient trauma, fewer rebondings, and reduced chairtime; and our Micro Etching adds even greater reliability. You will also experience easier clean-up because much of the adhesive is retained in the base upon debonding.



SuperMesh ME Base

Superior Angulation

The incisal aspect of OmniArch parallels the tooth's incisal edge, while the tie wings flow with the long, or crown axis. This provides unequalled mesiodistal / incisogingival orientation with precise tipping results.

Low Profile

Using the latest in materials and research, GAC has designed OmniArch with significantly lower profile. The design permits earlier bonding, less interference, and less soft tissue irritation.

Wedged Torque

OmniArch's Wedged Torque provides the aligned slots and placement advantages of torque in the base or diagonal design. It further incorporates an exclusive tie wing design that prevents occlusal interference and the resulting discomfort, bond failure and repositioning.

Size

OmniArch is the ideal size - small enough to be



Aligned Angulation

For unequalled mesiodistal/ incisogingival orientation

Wedged Torque

For aligned slots and placement advantages

Low Profile
Provides greater patient comfort



Mid-Sized & Rhomboid Shaped
For better performance and aesthetics

SuperMesh ME Base

Provides consistent bonding and fast clean-up